

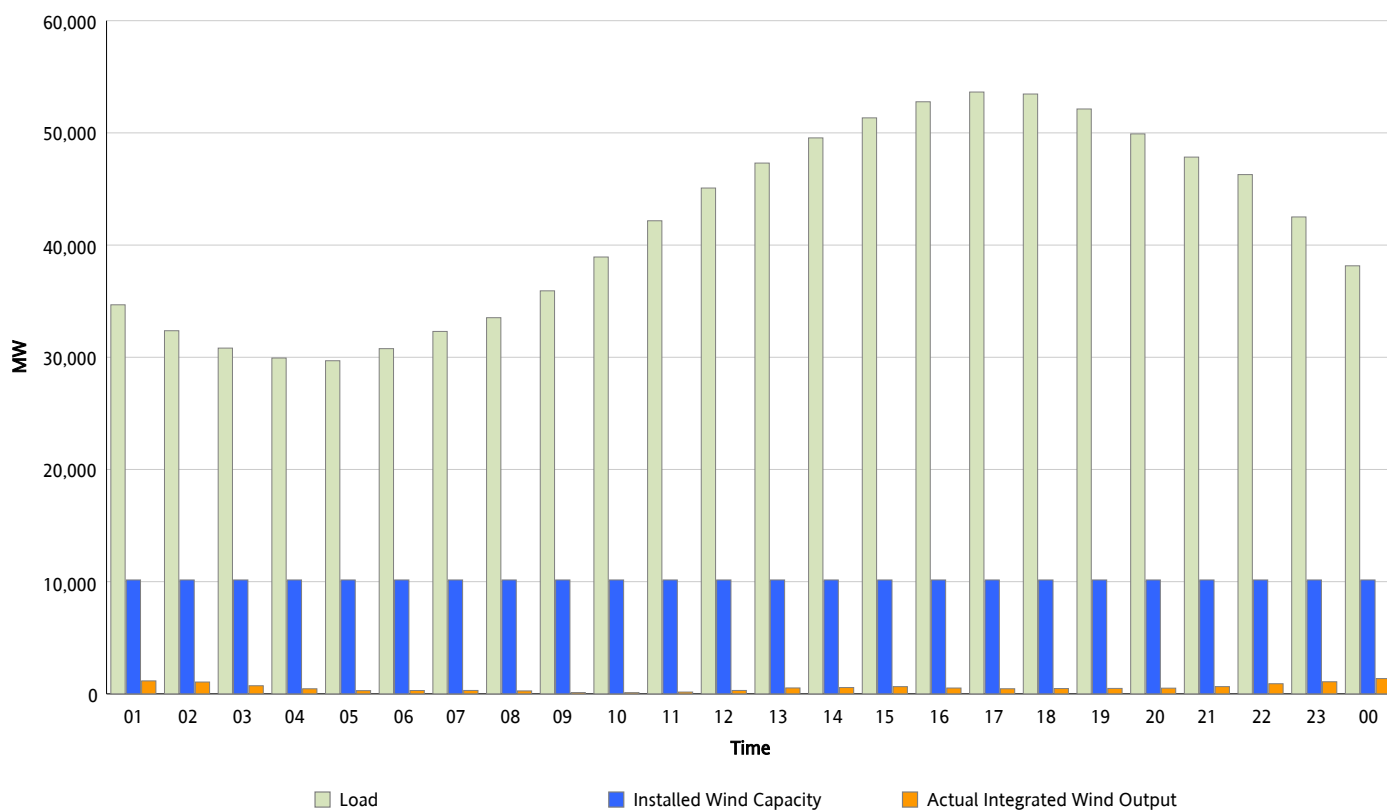


ERCOT Grid Operations

Wind Integration Report : 07/02/2013

Peak Load	53,643 MW
Load Peak Hour (HE)	17
Wind Over Peak	456 MW
Wind Record 05/02/13	9,674 MW
Max Wind Value*	1,609 MW
Wind Peak Time	00:00
Wind Integration %	4.44 %

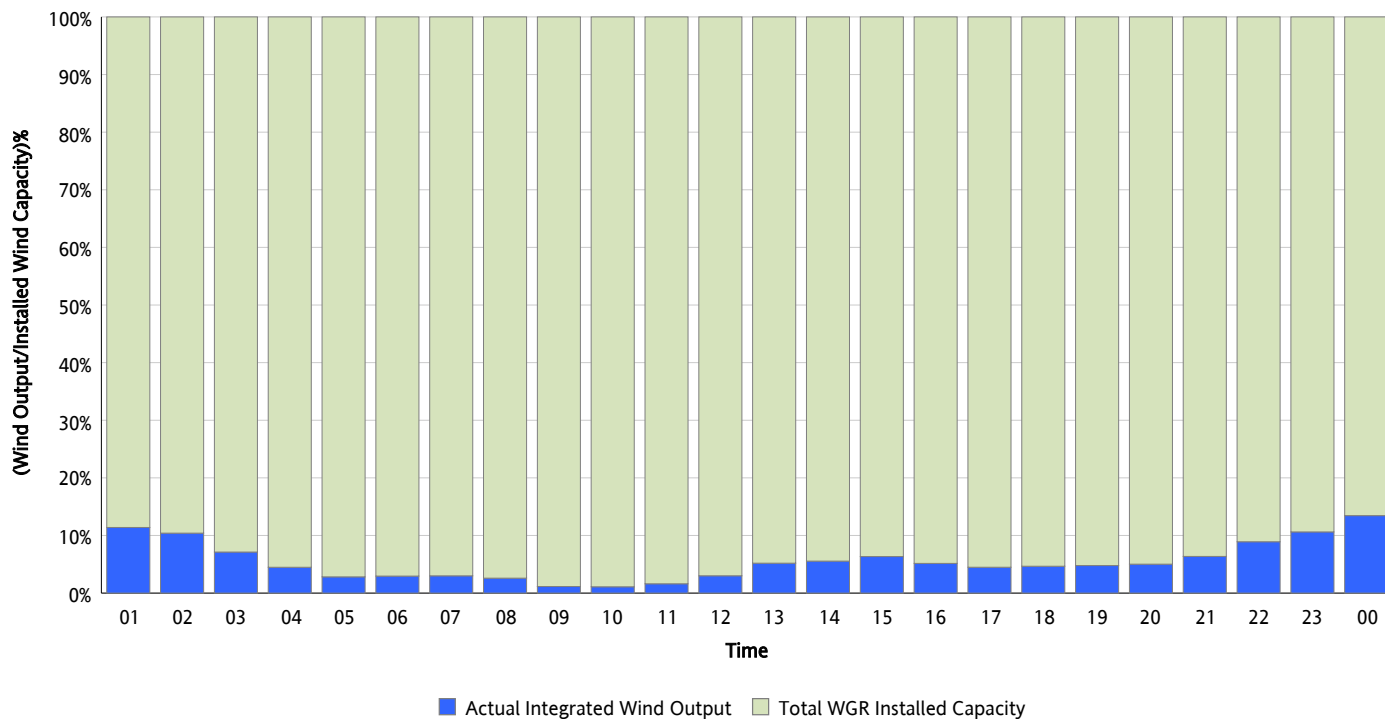
Hourly Average Actual Load vs. Actual Wind Output
07/02/2013



* Wind Record and Wind Max represent instantaneous values and the rest of the values are integrated over the hour

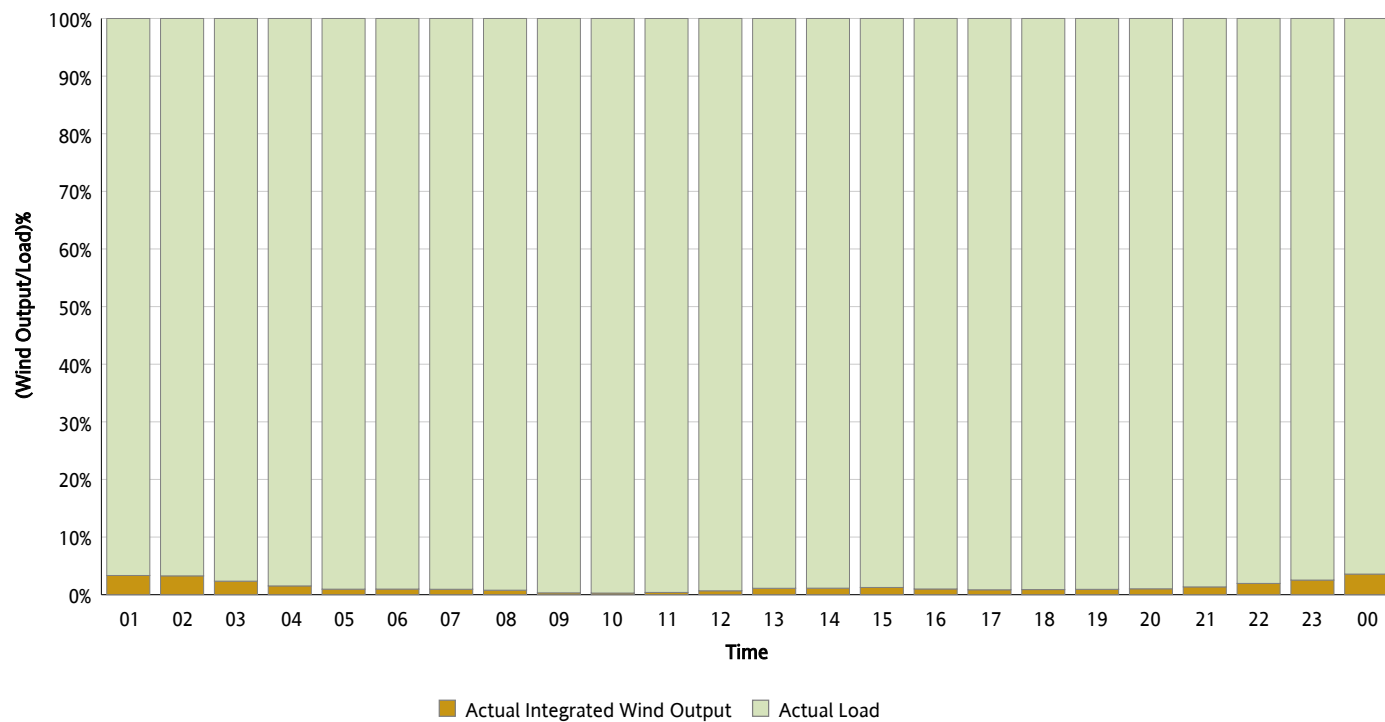
Actual Wind Output as a Percentage of the Total Installed Wind Capacity

07/02/2013



Actual Wind Output as a Percentage of the ERCOT Load

07/02/2013



ERCOT Load vs. Actual Wind Output

06/25/2013 - 07/02/2013

